



602XML Form Server 2.0

Installation Manual

Table of Contents

Table of Contents.....	2
Introduction	3
System Requirements.....	4
Download 602XML Form Server	5
Install 602XML Form Server	6
Register 602XML Form Server	7

Introduction

602XML Form Server is a back-end server solution for centralized management of electronic forms. Forms that flow through an organization for approval or data collection bring advantages in significant decrease of human resources and material costs. 602XML Form Server can collect data from anonymous or named users. 602XML Form Server ensures that users always have the most up-to-date version of a form through version management. 602XML brings an inexpensive way to integrate, control and manage information in an organization. The open architecture enables integration with any business process and data interoperability with existing systems.

System Requirements

The recommended system configuration for 602XML Form Server is a dual-core machine with Windows® 2003 Server and 1GB of RAM. Below are the minimum requirements:

Operating Systems

- Windows® 2000 Professional
- Windows® 2000 Server
- Windows® XP Home
- Windows® XP Professional
- Windows® Vista
- Windows® Server 2003
- Windows® Server 2008

Memory and Hard Drive Space

- 512 MB of RAM
- 200 MB for installation
- Additional storage space for forms, form data, full-text index, etc.

Server Requirements

- 602SQL Server 11 (included)
- Apache Web Server 2.2.4 (included)
- PHP 4.4.7 (included)

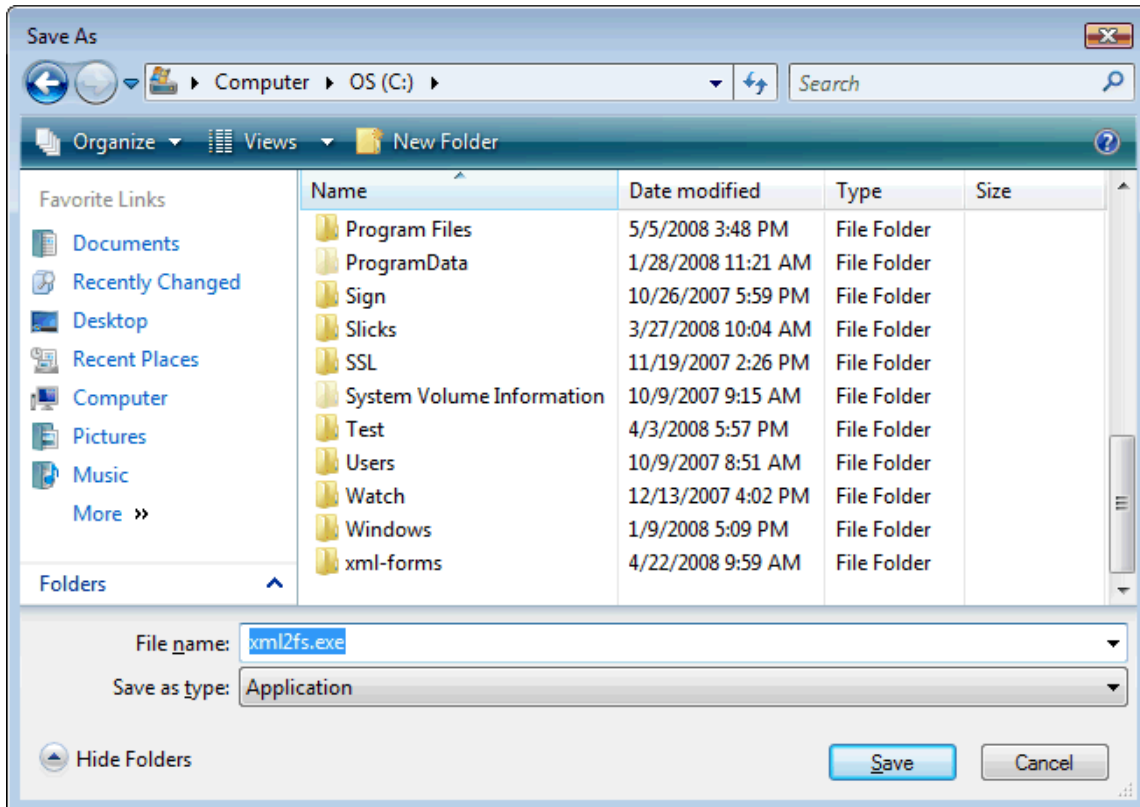
Client Requirements

- Microsoft® Internet Explorer 6.0 or higher
- Mozilla® Firefox® 2.0 or higher
- Software602 602XML Filler 2.5 or higher

Download 602XML Form Server

Follow the steps below to download 602XML Form Server:

1. Go to <http://www.software602.com/download/>
2. Click the appropriate download link on the web page.
3. When the dialog box appears, click **Save to disk** or **Save**.
4. From the drop down list at the top of the window, choose the **[C:]** drive and click **Save**.



5. Wait for the download to complete. Do not disconnect from the Internet until the download is complete. Some dial-up connections may take quite a bit of time to complete this step.

Install 602XML Form Server

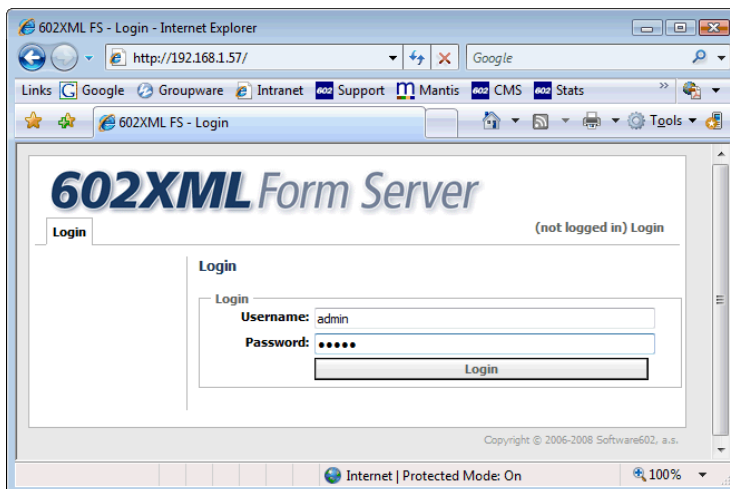
602XML Form Server Prerequisites:

- Nothing using **port 80** (e.g. Microsoft Internet Information Services, Skype, etc.)
- Apache 2 is **NOT** installed on this computer

The easiest way to install 602XML Form Server is when no previous web server software (or software that uses port 80) currently exists on the computer. If this is your case, 602SQL Server, Apache 2.2.4 and the required PHP modules will be installed.

Follow these steps to install the server:

1. Click on the **Start** button and choose **Run**.
 2. Remove any text in the **Open** line and type in **c:\xml2fs.exe**
 3. Click **OK** and the setup program for 602XML Form Server should now launch. After the files have unpacked themselves, you will be prompted to begin the installation. Click **Next** to go to the next screen.
 4. Be sure to read the license agreement. If you accept the agreement, click **Yes** to continue the installation.
 5. If you wish to install 602XML Form Server or the database to a different drive/path, you may do so by clicking **Browse**, then navigating to the destination folder. Click **Next** when satisfied, or to simply install 602XML Form Server to the default location.
 6. The Setup program will verify your settings. Click **Next** one more time to proceed.
 7. Setup will then begin copying files.
 8. After successful installation of 602XML Form Server, the installation program will offer to open your default Internet browser with the login page.
- Default admin login: **admin**
 - Default admin password: **admin**



Register 602XML Form Server

602XML Form Server will function for 60 days without activation. To continue use after 60 days, online activation is required. Follow these steps to activation the software:

1. Login to 602XML Form Server as the administrator.
2. Click the **Administration** tab, and then click **Licences**.
3. Copy and paste the Registration Key from your sales receipt into the **New Registration Key** field and then click the **Add** button.
4. Now click **Activate** to register the software online.

The screenshot displays the 602XML Form Server Administration interface. The top navigation bar includes 'Forms', 'Search', 'Forms Administration', 'Administration', and 'Preferences'. The user is logged in as 'Hello, Administrator'. A message at the top states: 'Licence number D6AMD-9UVZ2-ATA\XK-AZZXY-PYXZM was added. Please register the licence by activating changes.'

The 'Licence Information' section shows a table with the following data:

Licence Number	Status
D6AMD-9UVZ2-ATA\XK-AZZXY-PYXZM	unactivated ❌

Below the table is a 'Delete All Licences' button. The 'Add New Licence' section contains a 'New licence number:' input field and an 'Add' button.

The 'Activate Changes' section indicates '1 changes pending for activation.' It features two activation options:

- On-line Activation:** A single 'Activate' button.
- Off-line Activation:** A sequence of steps: '1. Create activation request file' (button), 'Activation response file:' (input field with 'Browse...' button), and '2. Upload activation response file' (button).