

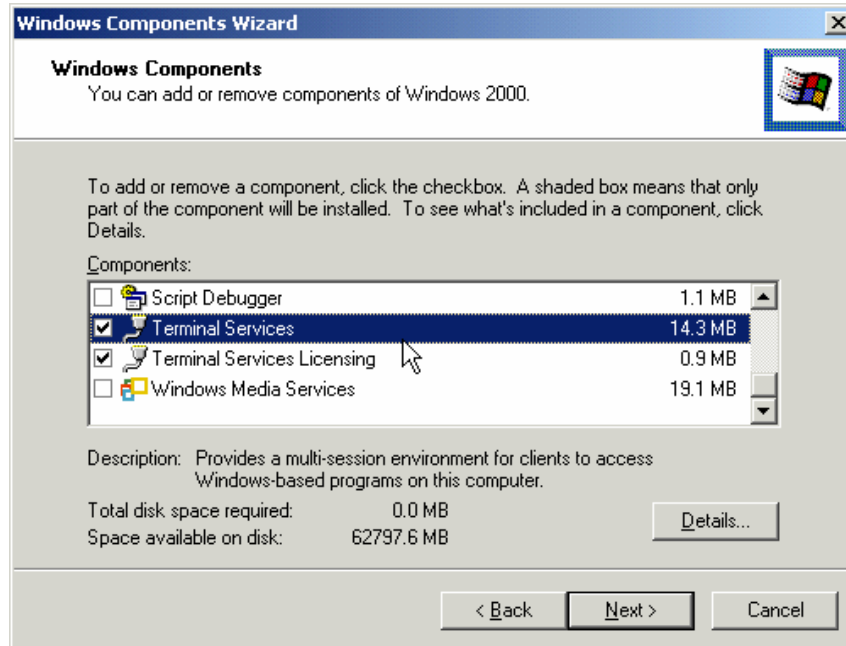


# Print2PDF 6.1 Server Edition

Installation Guide for Windows Terminal Services

## Using Windows Terminal Services

Print2PDF 6.1 Server Edition may be installed and used on Windows Server 2000/2003 running Terminal Services in either Application Mode or Remote Administration Mode. Be aware that Print2PDF will need to be reinstalled if the Terminal Services mode has been changed, so a commitment to one mode is recommended before installing.



## Enabling Windows 2000 Terminal Services

Windows 2000 Terminal Services should be set to run in Application server mode. Print2PDF 6.1 has been successfully tested using the permission setting Permissions compatible with Windows 2000 Users.

For a step-by-step procedure to enable Terminal Services, see the Microsoft web site:

- [http://www.microsoft.com/windows2000/en/server/help/ts\\_set\\_h\\_020.htm](http://www.microsoft.com/windows2000/en/server/help/ts_set_h_020.htm)

Other resources are available on the Microsoft Windows 2000 Terminal Services web site:

- <http://www.microsoft.com/windows2000/technologies/terminal/>

## Enabling Windows 2003 Terminal Services

Windows 2003 Terminal Services should be set to run in Application server mode. Print2PDF 6.1 has been successfully tested using the permission setting Full Security.

For a step-by-step procedure to enable Terminal Services, see the Microsoft web site:

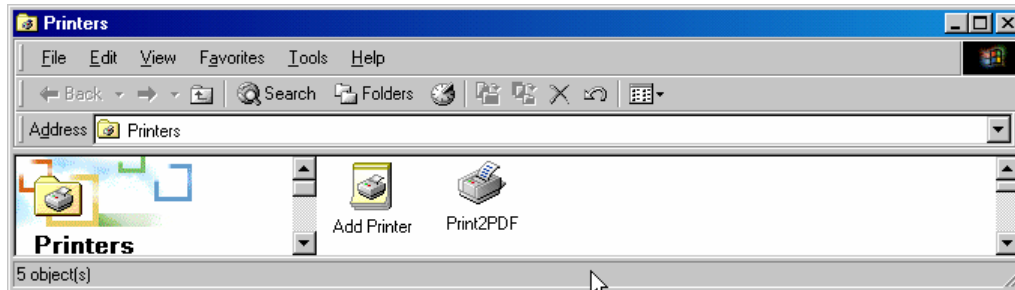
- <http://www.microsoft.com/windowsserver2003/techinfo/overview/quickstart.msp>

Other resources are available on the Microsoft Windows 2000 Terminal Services web site:

- <http://www.microsoft.com/windowsserver2003/technologies/terminalservices/>

# Installing Print2PDF Server Edition

1. Install the software as normal using an Administrator account from the server's console or a Terminal Server session.
2. After installation, the printer will appear as a normal printer to all users.
3. Register the software using the Register icon located in the Print2PDF Program Group. Only Administrator accounts may access the registration program.



## Terminal Services Application Compatibility

The Print2PDF printer requires the terminate and stay resident (TSR) program PrnPack.exe to function properly. Generally, when a user connects, the PrnPack.exe process will start by the following registry key:

HKEY\_LOCAL\_MACHINE\SOFTWARE\Microsoft\Windows\CurrentVersion\Run

When the above registry key is not executed when a user logs into the server, the following will be required for Print2PDF to function:

1. Open either your central user logon script or the individual USRLOGON.CMD scripts for this server (found in the %SystemRoot%\system32 directory).
2. Add the following line to the top of the script:

```
start %SystemRoot%\system32\spool\drivers\w32x86\3\PrnPack.exe /server
```

3. Save the file.