



Print2PDF 5.0

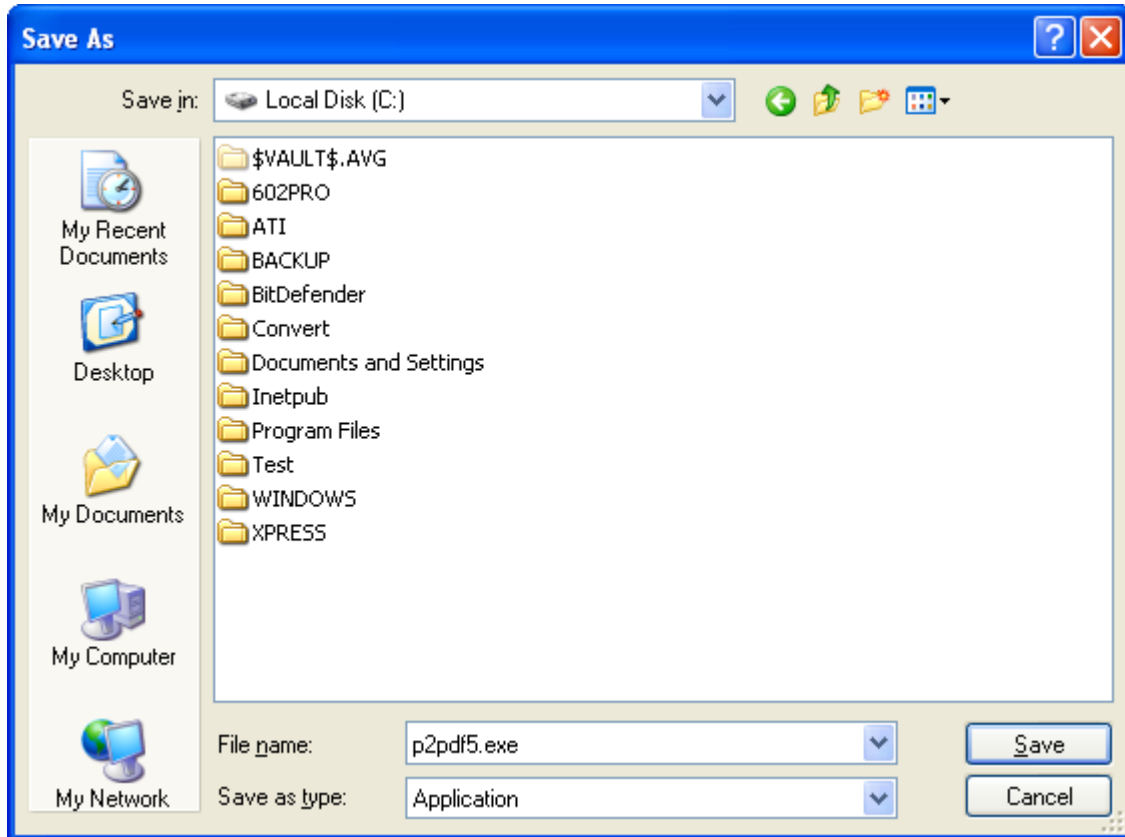
Installation Guide

Downloading Print2PDF 5.0

You can download Print2PDF 5.0 from our website at:

<http://www.software602.com/download/>

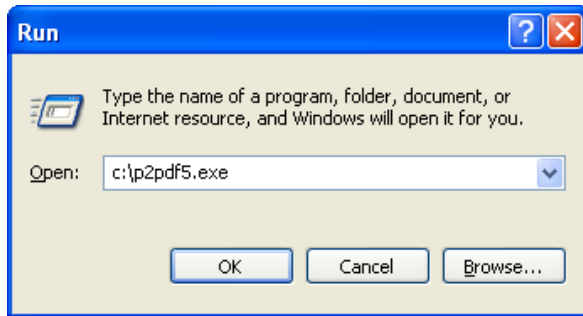
1. Go to <http://www.software602.com/download/>
2. Click the appropriate download link on the web page.
3. When the dialog box appears, click **Save to disk** or **Save**.



4. From the drop down list at the top of the window, choose the [C:] drive and click **Save**.
5. Wait for the download to complete. Do not disconnect from the Internet until the download is complete. Some dial-up connections may take quite a bit of time to complete this step.

Installing Print2PDF 5.0

1. Click on the **Start** button and choose **Run**.
2. Remove any text in the **Open** line and type in **c:\p2pdf5.exe**



3. Click **OK** and the setup program for Print2PDF 5.0 should now launch. After the files have unpacked themselves, you will be prompted to begin the installation. Click **Next** to go to the next screen.
4. Select your installation type from the available options, then click Next:
 - **Print2PDF Trial:** Use this if you want to install the 30-day trial version or you have already purchased a Print2PDF license.
 - **Print2PDF Multi-user:** Use this if you have purchased a Multi-user license for Print2PDF (This method will require the Company Name and License ID from the section Registering Print2PDF 5.0).
5. Be sure to read the license agreement. If you accept the agreement, click **Yes** to continue the installation.
6. Enter your User Name and Company Name as appropriate, then click **Next** again.
7. If you wish to install Print2PDF 5.0 to a different drive or path, you may do so by clicking **Browse**, then navigating to the destination folder. Click **Next** when satisfied, or to simply install Print2PDF 5.0 to the default location.
8. The Setup program will verify your settings. Click **Next** one more time to proceed.
9. Setup will then begin copying files.
10. Once the files have been copied, click **Finish** to exit the installation and reboot your computer.

Registering Print2PDF 5.0

Print2PDF 5.0 will function for 30 days without registration. To continue use after 30 days, online registration is required.

Print2PDF Trial

1. Open **Registration** from the Print2PDF program group
2. When the **Registration Wizard** appears click **Next**, then click **Register Online**.
3. Enter the **Registration Key** you purchased, then click **Next**.
4. Fill out the form with all of the appropriate information, be sure to use your correct e-mail address or you will not receive your **License ID**!
5. Wait¹ and check your e-mail, you will find a letter from Software602 in your inbox.
6. Inside the letter you will find a **License ID**, it will start with the letters **PA5CSA**. Highlight it with your mouse and be sure not to highlight any additional text or blank spaces.
7. Hold **CTRL** on your keyboard and then press **C** one time to copy the **License ID** to your clipboard.
8. Back to the **Registration Wizard**, click **Next**.
9. Click in the blank field that asks for the **License ID**, hold **CTRL** on your keyboard and then press the **V** key one time. If the **License ID** does not appear, please repeat steps 7 and 8 again.
10. Click **OK** and you will receive a message stating that your registration was successful.

Print2PDF Multi-user

1. From Step 6 of Installing Print2PDF click **Register Now**.
2. Enter your **Company name** and **Registration Key** you purchased then click **Next**.
3. Fill out the form with all of the appropriate information, be sure to use your correct e-mail address or you will not receive your **License ID**!
4. Wait¹ and check your e-mail, you will find a letter from Software602 in your inbox. Inside the letter you will find the **Company name** and **License ID** (it will start with the letters **PA5CMA**). Highlight the **License ID** with your mouse and be sure not to highlight any additional text or blank spaces.
5. Hold **CTRL** on your keyboard and then press **C** one time to copy the **License ID** to your clipboard.
6. Go back to the **Installation Wizard** and enter the **Company name** EXACTLY as shown in the letter (It MUST be in lower case!). Now, click in the blank field that asks for the **License ID**, hold **CTRL** on your keyboard and then press the **V** key one time. If the **License ID** does not appear, please repeat steps 5 and 7 again.
7. Click **OK** and you will receive a message stating that your registration was successful.

¹ E-mail delivery to your computer depends on many factors and may vary according to Internet traffic and your ISP. If you do not receive your License ID within 24 Hours, please re-register. E-mail delivery is in no way guaranteed due to factors beyond our control.